



**MAKS is an organization for mothers of young children.**

*We desire to minister to the hearts of mothers and to encourage & nurture them in their personal & family lives.*

**Join us on the first & third Tuesday of each month in the Fireside Room, from 10-noon.**



**March 5th**

*“Photography & Kids”*

**March 19th**

*“Child Training Bibles”*



## WOMEN’S MINISTRY

### Upcoming Events



*A big Thank You from Women’s Ministries to everyone who served, donated and attended our Souper Bowl Sundae Lunch!*

\*\*\*\*\*  
**Coffee & Conversation**  
**Friday, March 22nd**  
**7:00pm**  
 Come for fun & fellowship at CCC!  
 \*\*\*\*\*

-----  
**Nehemiah**  
**Precepts Bible Study**  
**Begins Monday, April 1st**  
 Monday evenings 6:30-8:30  
 \$12.50 - Sign-up at the Info Booth  
 Registration deadline is March 17th

\*\*\*\*\*  
 Mark your calendar for  
**Spring Retreat**  
**“A Heart Set on Heaven”**  
 \*\*\*\*\*



Guest speaker:  
**Gretchen Havlicek**  
**April 19-20**  
**at Camp Victory**  
**Cost \$60**  
 More details to come!

# AWANA Club Corner

## Special AWANA Nights

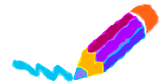
March 6 - Pastor Appreciation

Sat., March 16 - Grand Prix - 9:00am

March 20 - Grand Prix Showcase



## Art Exhibit



We will be changing the art exhibit in the hall of the new addition fairly soon, and we would like our next exhibit to feature the art work of children in grades one through six. The size of the work should be 11x14". Any medium may be used, and it should NOT be framed. The deadline for completed work will be March 31.

*Please contact Grace (835-8724) or Trudi (507-213-9242) for further details.*

## Our Easter schedule - Sunday, March 31st

Services at 8:00 and 10:45am

*No children’s Sunday school but classes for adults will be held*

# Youth Missions Fundraiser

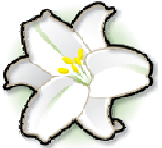



**Sunday, March 17th**

*Spaghetti Feed & Baked Goods Auction*



## MARCH 2013

Sun	Mon	Tue	Wed	Thu	Fri	Sat
					<b>1</b> <b>6:00am</b> Men's <b>8:00pm</b> Club 180	<b>2</b> <b>9:00am</b> Grand Prix Work <b>7:00pm</b> Hymn Sing
<b>3</b> <b>8:00 Worship</b> <b>9:30 S.S.</b> <b>10:45 Worship</b> <b>12:30 Newcomer Luncheon</b> <b>5:00 Prayer</b>	<b>4</b> <b>10:00 Women's Study</b> <b>6:30 Precepts</b>	<b>5</b> <b>10:00 MAKS</b> <b>6:00 Family Care</b> <b>6:30 Children's</b> <b>6:30 Youth</b> <b>7:00 Cong Care</b> <b>7:00 Property</b>	<b>6</b> <b>6:00pm</b> AWANA <b>6:00 Jr Hi</b> <b>7:00 Sr Hi</b>	<b>7</b> <b>12:00 Men's Lunch</b> <b>6:15 Worship Team</b> <b>7:00 Women's Study</b>	<b>8</b> <b>6:00am</b> Men's Group <b>6:00pm</b> March Madness	<b>9</b> <b>7:30am</b> Next Man Up <b>9:00am</b> Grand Prix Work Day
<b>10</b> <b>8:00 Worship</b> <b>9:30 S.S.</b> <b>10:45 Worship</b> <b>5:00 Prayer</b>	<b>11</b> <b>10:00 Women's Study</b> <b>6:30 Precepts</b> <b>6:30 Outreach</b>	<b>12</b> <b>4:30 Women's Ministries</b> <b>7:00 Missions</b>	<b>13</b> <b>6:00pm</b> AWANA <b>6:00 Jr Hi</b> <b>7:00 Sr Hi</b>	<b>14</b> <b>12:00 Men's Lunch</b> <b>6:15 Worship Team</b> <b>7:00 Women's Study</b>	<b>15</b> <b>6:00am</b> Men's <b>8:00pm</b> Club 180	<b>16</b> <b>9:00am</b> AWANA <b>Grand Prix</b>
<b>17</b> <b>8:00 Worship</b> <b>9:30 S.S.</b> <b>10:45 Worship</b> <b>12:30 Youth Fundraiser</b> <b>5:00 Prayer</b>	<b>18</b> <b>10:00 Women's Study</b> <b>1:00 Quilting</b> <b>6:30 Precepts</b>	<b>19</b> <b>10:00 MAKS</b> <b>6:30 Elder Meeting</b>	<b>20</b> <b>6:00pm</b> AWANA <b>6:00 Jr Hi</b> <b>7:00 Sr Hi</b>	<b>21</b> <b>12:00 Men's Lunch</b> <b>6:15 Worship Team</b> <b>7:00 Women's Study</b>	<b>22</b> <b>6:00am</b> Men's <b>7:00pm</b> Women's <b>8:00pm</b> Club 180	<b>23</b>
<b>24</b> <b>8:00 Worship</b> <b>9:30 S.S.</b> <b>10:45 Worship</b> <b>5:00 Prayer</b>	<b>25</b> <b>10:00 Women's Study</b> <b>7:00 Outreach Event</b>	<b>26</b> <b>7:00pm</b> Adult Discipleship	<b>27</b> <b>6:00pm</b> AWANA <b>6:00 Jr Hi</b> <b>7:00 Sr Hi</b>	<b>28</b> <b>12:00 Men's Lunch</b> <b>6:15 Worship Team</b> <b>7:00 Women's Study</b>	<b>29</b> <i>Good Friday</i>	<b>30</b>
<b>31</b> <b>8:00 Worship</b> <b>9:30 S.S.</b> (only adult classes today) <b>10:45 Worship</b> <b>5:00 Prayer</b>						



# Cornerstone

*A heart for God and you*

March 2013

Volume 11, Issue 3

### "Think About It"

*Associate Pastor of Ministry Advancement & Adult Ministries - Howard Lundeen*

***"I have no greater joy than to hear that my children are walking in the truth.." 3 John 1:4***

If I were to ask you, "What are some of the most important elements of the Christian walk?" what would you say? I would like to suggest what I will call the "Big 4"!

1. **GOD** – We cannot have too great an image of Him. We all need to meditate on all of his glorious attributes! Taking time to know God is undoubtedly the most valuable use of time a person could engage in. We will be amazed and humbled as we experience the revelation of His might and glory.

2. **LOVE** – Sincere, honest love is extremely powerful! From the youngest child to the oldest adult, when people communicate with them in deep, heartfelt love they feel respected and valued. When we share about Christ and his gospel in sincere love for the person, the Spirit of God can, and will, work powerfully. In 1 Corinthians 13 we read that love never fails, but without love we can accomplish nothing. If we have a deep love for God & others, the world cannot help but notice and they will know that we are followers of Jesus Christ.

3. **TRUTH** – In John 8:32 we are told that if we wish to be free from the control that sinful desires exert in our lives, we must live in accord with God's truth. We need to claim his precious promises and obey his wise commands. If we want to be wise, all our decisions must be grounded on the foundation of truth. Nothing stable or of lasting worth can be built on lies. The fact that Jesus and God's word are sources of absolute truth, is a blessing that provides a sure foundation for all of us as believers in Christ to build our lives upon.

4. **GOD DEPENDENT** – Trusting God in all things is the only way to live a productive and peaceful life. Apart from Christ we can do nothing and yet with Him we can do all things. One manner in which this dependence on God is best lived out is through prayer. It has been said, "If you see God working, you know there are people praying." God's promises about prayer offered in faith are not idle ones. Confident, expectant prayers will move mountains. With God all things are possible! We must realize that spiritual warfare is won only by God's Spirit at work, not our effort. We are totally dependent on Him!

If we allow these "Big 4" principles to guide our walk with the Lord, I believe that our life will be productive and effective. What do you think? Think about it.

Seeking to know God & make Him known,

*Pastor Howard*

## Christ Community Church

2200 4th Street NE - Waseca, MN 56093

Phone: (507) 835-2235  
 Fax: (507) 833-8857  
 E-Mail: [ccc@cccefca.com](mailto:ccc@cccefca.com)  
 Website: [www.cccefca.com](http://www.cccefca.com)  
 Prayer Requests:  
[prayer@cccefca.com](mailto:prayer@cccefca.com)